

ARMAM

FLAX



L1569/17



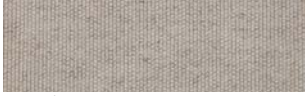
L1569/19



L1424/01



L1424/06



L1569/01



L1569/11



L1424/03



L1424/04



L1569/03



L1569/14



L1424/02



L1424/20



L1569/05



L1569/02



L1424/19



L1424/16



L1569/20



L1569/04



L1424/12



L1424/17



L1569/06



L1569/13



L1424/07



L1424/18



L1569/07



L1569/16



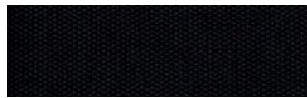
L1424/11



L1424/14



L1569/09



L1569/21

cat. **C**

39% VI - 35% CO - 16% PL - 10% LI



cat. **C**

54% JU - 46% LI



IKAT

L1575

13696

porada twenty



L1575/01



13696/08



L1575/10



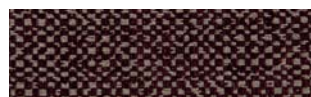
13696/57



L1575/12



13696/27



L1575/14



13696/24



L1575/07



13696/09



L1575/04



13696/54



L1575/05



13696/12



L1575/06



13696/52

LOOM



L1534/01



L1534/02



L1534/03



L1534/08



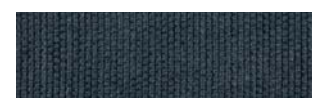
L1534/06



L1534/09



L1534/10



L1534/11



L1534/13



L1534/12

cat. C

51% VI - 23% CO - 16% PL - 10% LI

75% PL - 16% CO - 9% PC

cat. C

52% VI - 25% CO - 12% LI - 11% PL



MADRAS



18



17



01



02



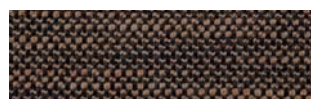
11



15



16



04



12



14



07



09



05



06

MOLESKIN



38



20



42



04



32



36



05



06



11



13



23



24



16



14



43



44



22



21



45



46

cat. **C**

30% CO - 29% PC - 26% PL - 15% VI



cat. **C**

100% PL



MORAN

PATCH

porada twenty



101



113



02



08



102



114



03



09



103



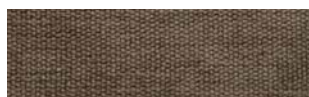
115



05



17



104



112



18



06



106



111



10



14



108



109



07



15



116



110

cat. C

50% VI - 30% CO - 20% PL

cat. C

47% VI - 26% CO - 10% LI - 8% PL - 6% PA - 3% PC



SERGE



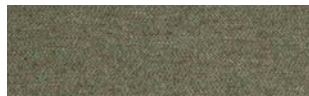
001



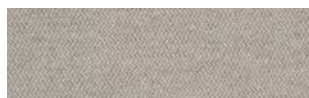
055



003



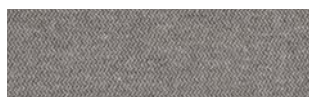
036



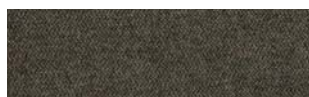
004



043



009



044



010



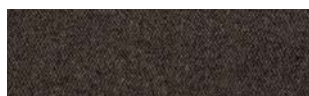
146



089



091



028



155



065



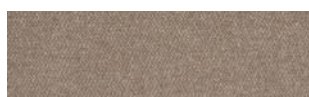
159



066



160



020



162

cat. **C**

80% WO - 20% PA



VELVET

porada twenty



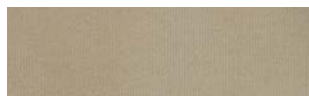
31



06



103



94



69



79



95



110



88



96



39



89



116



36



72



60



19



75



112



24



77



50



30



90



49



114



47



83

cat. C

100% CO



WOOL

ECOPELLE



01



803



150



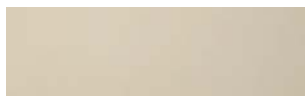
750



02



10



250



2350



06



806



350



2450



07



811



1150



1850



809



812



1250



1950



12



807



1050



2150



802



801



1350



450



808



08



2850



2050



805



09



2750



1550



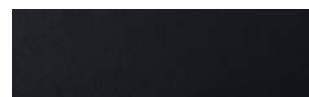
810



05



850



2250

cat. C

65% WO - 15% WP - 20% PA

cat. D

63% PU - 37% CO

